

# DOCTOR LIFE<sup>®</sup>

By DS MAREF co., Ltd.

Total solution brand of Air compression therapy system



# Company introduction,

For your happier and healthier life



## Medical department

**DOCTOR LIFE**<sup>®</sup> Health care

**DOCTOR LIFE** is a main brand of domestic home care market

Refrigeration parts department  
Refrigeration facilities department



**Masters** is a main brand of refrigeration assist parts department

# Company introduction,

For your happier and healthier life

## Company introduction

- DS Maref is a professional company of various air compression therapy since 1986.
- DS Maref is exporting to 50 countries.
- DS Maref has the most selections of air compression applications in overseas market.
- DS Maref has international certificates of TGA, FDA, CE, ISO13485, SFDA, and KFDA.
- DS Maref has R & D center that Government authorized as medical professional R & D center.
- DS Maref is managing perfectly all products quality under KGMP and ISO 13485.

## Awards

- President award (No. 126577)
- Ministry for health, welfare and family affairs award (No. 64266)
- KFDA award (No. 2006-33)
- The world class products award (Ministry knowledge economy, 2004)
- Innovation management company award (060516-02178)
- Authentication of Merit certification (No. 2007-127)
- KOTRA B2B e-Trade award (2006.12)
- KTORA seal of brand company award(2009. 5)

# Company introduction,

For your happier and healthier life

Main office  
& factory



SINCE 1986

◆ 1986년 설립 ◆ 1990년 ISO 9001 인증 ◆ 1995년 FDA 인증 ◆ 1998년 SFDA 인증 ◆ 2000년 LIFE 인증 ◆ 2002년 LIFE 200M 인증

New Second  
factory



Stories house



# Our vision,

For your happier and healthier life

- WEBSITE: <http://www.dsmaref.com>
- COMPANY: <http://blog.naver.com/kabi3333/94164529>
- CUFF 3D: <http://blog.naver.com/kabi3333/94164628>
- We are a professional manufacturer of air compression application medical devices under **“DOCTOR LIFE healthcare”** brand name since 1986
- We try to expand our business more positively with high technology of pneumatic medical systems for more world wide global business.
- We will not stop developing our techniques and services for the user’s happier life.

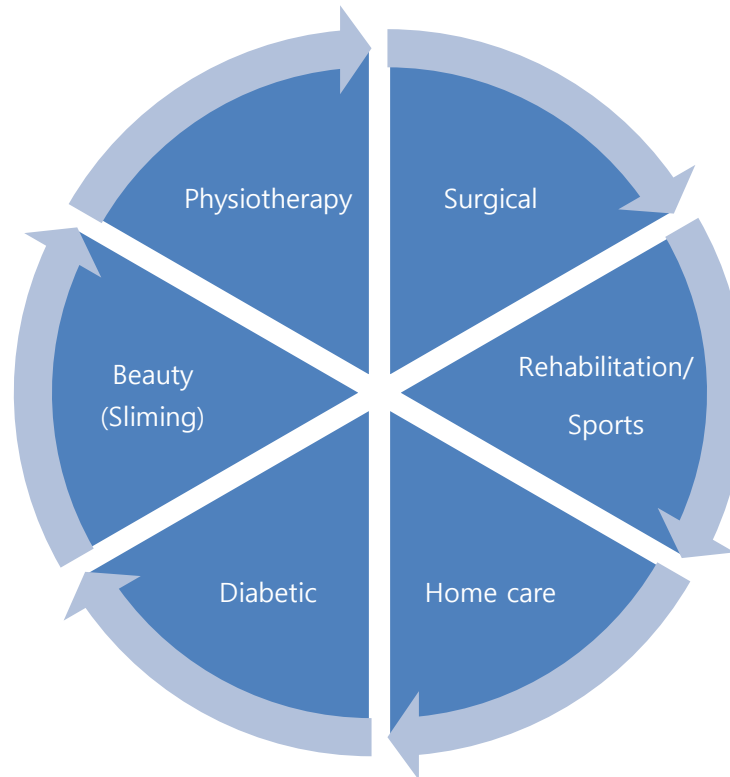


# Marketing

For your happier and healthier life

**Terms:** IPC (Intermittent Pneumatic Compression) systems, Air compression therapy system, DVT prevention, Drainage system, Air massage device

## Categories:



# Marketing History

For your happier and healthier life

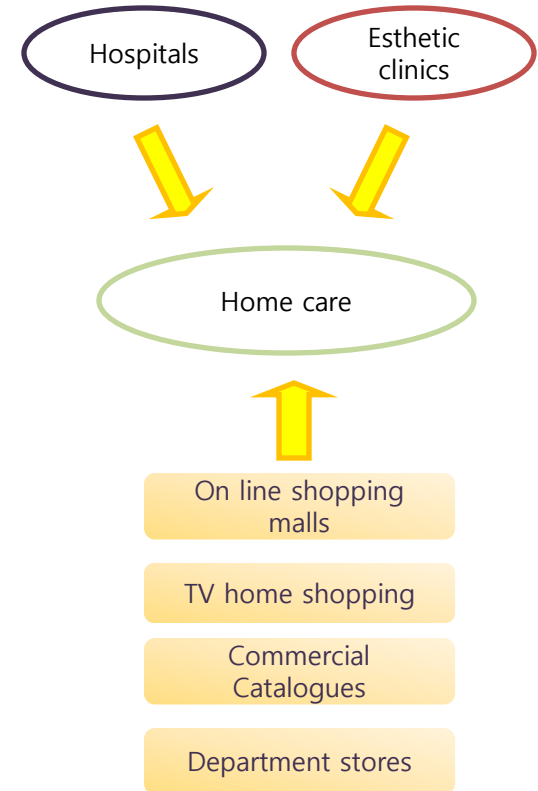
DS maref drainage systems is a so effective automatic drainage and circulation system. In the past, when there is no any air compression system in Korea. Almost Korean physiotherapists and estheticians had used MLD (Manual Lymph Drainage), bandage or compression stocking mainly for drainage for lymphatic edema therapy.

These therapies are effective for initial lymphatic patients but it not enough for a patient having big swollen leg or arm by serious lymph stagnation. Drainage system helped effectively patients recovery from various patients' diseases as well as lymphatic edema. Especially, patients are satisfied with both of drainage system dynamic air compression massage and the effects.

In many esthetic shops, drainage system is used regularly as a basic item to promote the blood circulation, drain toxic and stagnant lymph and release lumped muscles with soft massage for their sliming .

Many users experienced drainage system in hospitals or esthetic shops wanted to buy our drainage system for their private use. So, without any advertisement, drainage system have been spread naturally through mouth and mouth to home care market. Nowadays, we are advertising our brand through TV, Radio, many magazines and Internet in domestic market and through many exhibitions in overseas market.

We hope to share our successful experience with future valuable partners in all over the world.

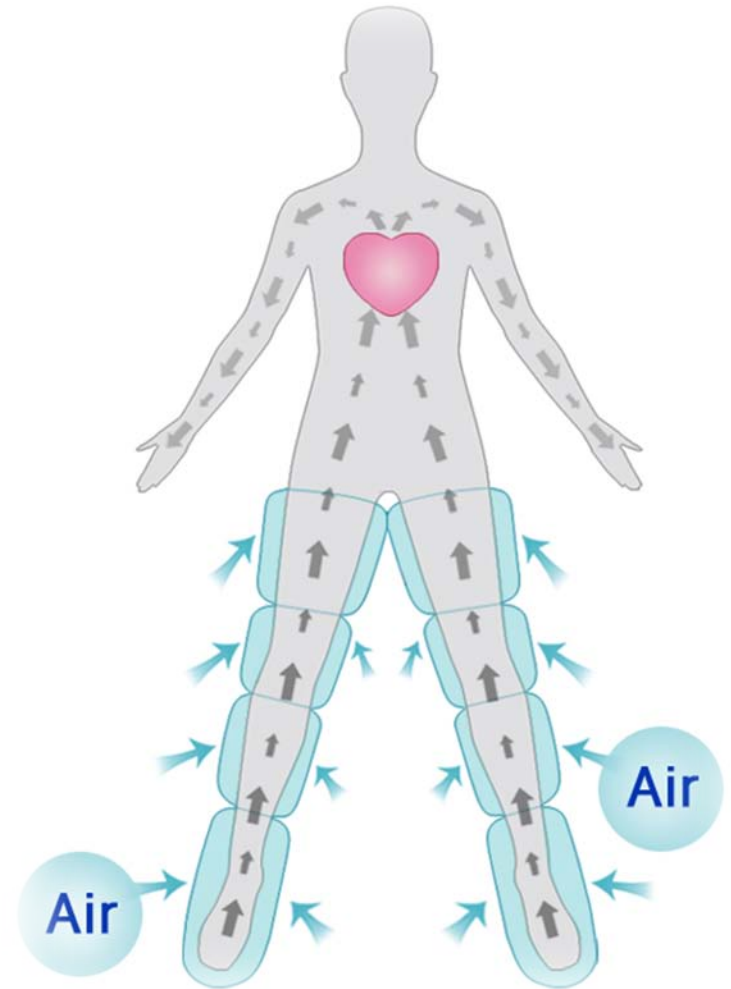


# Product principle,

For your happier and healthier life

- **All human bodies are managed by smooth circulation of blood and lymph.**
- **DS maref drainage system system helps that various patients are recovered from their disease by promoting blood and lymph circulation and metabolism.**

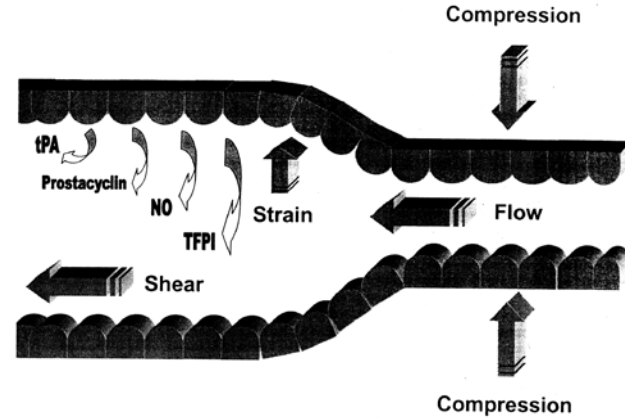
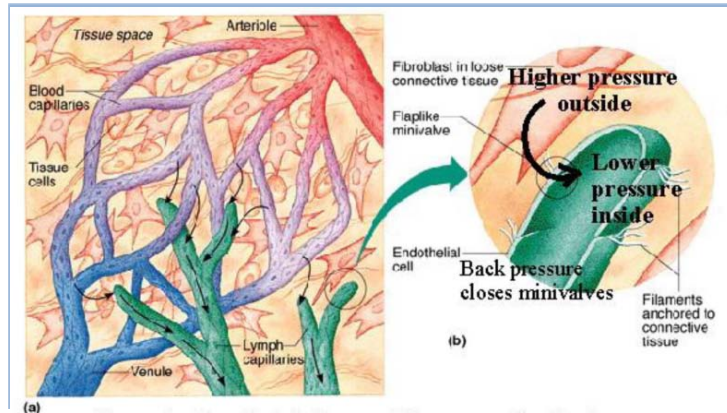
**D**rainage, **C**irculation, **S**oft massage



# Product principle,

For your happier and healthier life

## Lymphatic Motion & Pressure Gradient



# Product trend,

For your happier and healthier life

Lymphatic or Toxic  
drainage

MLD (Manual Lymph  
Drainage)

Compression bandage

compression stocking



**Automatic air  
compression system**

DVT prevention

Medicine, Compression  
stocking



**Automatic air  
compression system**

# Indications,

For your happier and healthier life

## Medical indications

- DVT (Deep Vein Thrombosis)
- Lymph edema
- Post-paralytic
- Limb convulsion
- Phleboscrosis
- Diabetes
- Varicose
- Chronic venous insufficiency (CVI)
- Arterial insufficiency
- Post-mastectomy
- Post-traumatic
- Spinal cord injury
- Sciatica
- Sprains

## Home care indications

- Lymph edema
- Diseases by interruption in blood circulation
- Cellulite (Fat dissolution)
- Pregnant woman's limb management
- Numb feet or hands
- Cold feet or hands
- Settlement of stress
- Exercise effects
- Old age, weakness and fatigue
- Insomnia
- For healthier body and elastic skin

# Our activities,

For your happier and healthier life

## Overseas activities

- Above 15 International Exhibitions
- Exporting to 50 Countries (2009)
- Sales increases rate, 30~40%
- International Certificates  
(FDA, CE, ISO13485, SFDA, TGA, KGMP)

## Domestic activities

- Market share No.1 in medical field
- Market share No.1 in esthetic field
- Market share No.1 in home care  
(Great mass sales of Online shopping malls,  
Major Broadcasting (TV, Radio), Catalogue  
Departments, Big marts)



# Medical air compression systems

## *DVT-2600* (Prevention system of DVT)

- 3air chambers for effective sequential compression
- Superior eco-friendly materials selections
- Special finishing coating for the prevention of any pollution cause
- Safe attachments design for any scratches prevention
- 2~3months durable test under Max. Pressure, 60mmHg
- One touch hose fixed to each cuff



### System features

- Auto optimum operation system by one touch button.
- Selectable manual settings operation system (Pressure, Interval time, Use time)
- Safety alarm system by self detection system (Cuff, Pressure, Power, Battery)
- Stable compression cycle operation by regular vascular cycle time application
- Self pressure sensor calibration during power input and operation intermittently
- Silent operation noise minimized for comfortable use in operation or ICU rooms.
- Built-in battery - Minimum 6~ hours use
- Auto battery power conversion in the case sudden AC power failure.
- Free voltage: AC100 ~ 240V, 50/60Hz
- Power consumption: 35W
- Pressure range: Thigh/calf – 20, 30, 40, 50, 60mmHg, Foot – 120, 130, 140mmHg
- Use time: Non-stop, 72hours
- Interval time: 24, 48, 60 seconds
- Main body (mm): 190(H) x 200(W) x162(D)
- Weight: 2kg

# Medical air compression systems

## Digital pneumatic tourniquet system

### DTS-2000W

(2 channels of 2 double cuffs)

#### System features

- 2channels (4Ports for 2double or single cuffs use)
- Separate pressure and operation of 2channels
- Easy settings by Touch Key operation
- LCD screen : Easy checking and cleaning
- Save faction
- Self test of pressure sensor and system check
- Self air pressure sensor calibration
- Safety alarm system (cuff, pressure, battery, time checking and alarm sound)



#### Specifications

- Max pressure: 600mmHg
- Voltage: Free voltage (AC 100 - 240V - 50/60Hz)
- Power consumption: 50W
- Noise dB: Below 60dB
- Time range: 5 - 180 Min.
- Compressor weight: 5.6kg
- Compressor dimension: 225(W) X 185(D) X 240 (H)mm
- Battery life time: 12 - 72hours



Reusable tourniquet cuffs



### DTS-2000S

(2 channels of 2 single cuffs, 1 channel of 1 double cuff)

#### System features

- 2channels (2single cuffs use or 1double cuff use)
- Separate program settings of 2channels
- Touch key pad controllers: Easy checking and cleaning
- Save faction
- Self test of pressure sensor and system check
- Self air pressure sensor calibration
- Safety alarm system (cuff, pressure, battery, time checking and alarm sound)
- Auto battery power conversion in the case sudden AC power failure

#### Specifications

- Max pressure: 600mmHg
- Voltage: Free voltage (AC 100 - 240V - 50/60Hz)
- Power consumption: 50W
- Noise dB: Below 60dB
- Time range: 5 - 180Min.
- Compressor weight: 5.6kg
- Compressor dimension: 225(W) X 185(D) X 240 (H)mm
- Battery life time: 12 - 72hours



# Medical air compression systems

12  
Step

DL1200L



## SYSTEM features

- 12 step compression program
- Graphic LCD display
- 8 compression modes (A mode ~ H mode)
- Individual pressure setting of each chamber
- Skip pressure optionally of a chamber
- Inflation time control by 'HOLD' button
- Interval time control by 'INTERVAL' button

## Specifications

- Pressure range: 0mmHg (Skip), 20 ~ 200mmHg
- Time range: 0 ~ 90mmHg
- 8 compression modes: A ~ H mode
- Hold time range: 0 ~ 6 seconds
- Interval time range: 0~ 19 seconds
- Machine size: 400 x 350 x 220mm
- Machine Weight: 18kg

# Medical air compression systems

6Step

DL850L

## System features

- Graphic LCD window
- Mode selection programs by 8 compression modes
- Individual pressure setting of each chamber
- Skip (pressure) setting partially of a cuff
- Inflation time control by 'HOLD' key.
- Interval time control by 'INTERVAL' key
- Save key
- Reset

## Specifications

Pressure range: 0 (Skip pressure), 20 ~ 200mmHg

Time range: 0 ~ 90 min.

Compression mode selection: A ~ H modes

Hold time range: 0 ~ 6 seconds

Interval time range: 0 ~ 19 seconds

Machine size: 370 X 390 X 190mm

Machine weight: 13kg

FOR YOUR HEALTHIER LIFE

FDA CE GMP ISO 9001 / EN 13485 SFDA

# DOCTOR LIFE<sup>®</sup>

Total solution brand of air compression therapy systems

MK850L  
( High class models )

Daesung Maref is a professional manufacturer of air compression application medical devices since 1986.

We provide products with wide selections covering medical, esthetic or home care market.

We are concentrating on R & D for leading technique and design in global market.

We promise the best quality and service satisfying various customers' need.



<http://www.dsmaref.com>

# Medical air compression systems

6 Step

## MK400

### Professional compression system

The professional Lymphatic drainage system, MK400 has essential and effective functions to help recovery and improve the patients suffering from abnormal circulation and drainage by various diseases.



#### SYSTEM FEATURES & SPECIFICATIONS

- Touch key pad controllers
- Compression mode: A, B, C modes
- Optional care program: Able to eliminate the part to not expect to treat.
- Reverse controller: Pressurize two times of regular sequential operations (Bottom to up) and one time of reversed sequential operation (Up to bottom) automatically.
- Pressure range: 10 ~ 200mmHg
- Time range: 5 ~ 95minutes



# Medical air compression systems

## DL series(4 chambers)

Popular & basic models

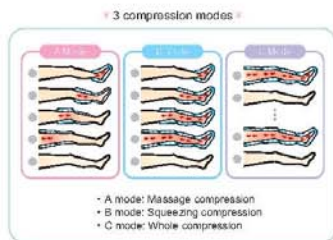
## DL series(4 chambers)

Semi-professional models



DL2002D (Digital)

**Leg is the second heart!**  
*"It is a pump pushing blood up to the heart during working"*



- **Features & Specifications**
- 3 compression modes: A, B, C mode
- Pressure air sensor (Built-in)
- Digital timer (10, 20, 30, 40 or 10, 30, 60, 90 minutes)
- Pressure range: 10 ~ 180mmHg
- Machine size: 190 X 250 X 210mm
- Machine weight: 3kg



DL2002B (Modern)



DL2002B (Basic)



DL2003V3 (Economy)



Arm cuff

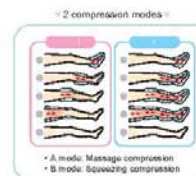


Waist cuff



### Features & Specifications

- Two compression modes: A, B mode
- Pressure air sensor (Built-in)
- Time range: 0 ~ 60minutes, continuity
- Pressure range: 20 ~ 240mmHg (±20mmHg)
- Machine size: 190 X 250 X 210mm
- Machine weight: 2.9kg



### Features & Specifications

- One compression mode: A mode
- Time range: 0 ~ 30minutes
- Pressure range: 20 ~ 240mmHg (±20mmHg)
- Machine size: 190 X 250 X 210mm
- Machine weight: 2.8kg

### Features & Specifications

- One compression mode: A mode
- Slim & simple design
- Time range: 0 ~ 30minutes
- Pressure range: 20 ~ 240mmHg (±20mmHg)
- Machine size: 250 X 115 X 175mm
- Machine weight: 2.2kg

# Medical Indications Guide

- It is good to use DSmaref system with a patient's comfortable posture for the best effects. (lying is more effective)
- We have the wide pressure range (10~200mmHg) to cover various therapy indications. However, we recommend all beginners to apply the device with the lowest pressure for 5 minutes for their safe use.
- Even though the pressure, around 10~80mmHg is proper for 15 minutes in initial use period, for patient's safe use, the pressure intensity and time should be controlled by doctor's indications according to user's state.
- For example, pressure, 40mmHg is set regularly for DVT prevention under surgical operation and in ICU.
- User can increase the pressure intensity gradually by a doctor's advice , according to a patient's state.
- The period of treatment can be different depending on doctor's indication or patient's convalescence.

# Medical Indications Guide

## **Deep Vein Thrombophlebitis (DVT)**

- DVT can occur some serious problems when thrombophlebitis (clots) stay at anywhere of body after surgery operation. DS maref drainage system is used for the prevention and cure of DVT before, during and after surgeries by accelerating the blood circulation to remove the clots in blood.

## **Lymph edema drainage**

- DS maref drainage system shows obvious effects for Lymph edema occurred from the damage of a lymph gland during surgery operation by draining the stagnated lymph with soft air compression massage.

## **Diabetic**

- This system is very good for diabetic patients, because the blood circulations by air compression alleviate the hyperglycemia.

## **Hypertension**

- As DS maref drainage system makes the blood very clearly through its active circulation of blood, it can cure the Hypertension basically. In the case of hypertension patients, they should be careful and definitely follow up the indications of their doctors. They should start from the lowest pressure.

## **Alternative exercise** for patients of obstacle of body movement

DS maref drainage system have Alternative exercise effects for patients of obstacle of body movement like paraplegic patients, malformation of limb by accidents, etc. As air intermittent compression stimulus the trouble limb and promotes the circulation of blood and lymph of whole body of the patients, it give similar effects as exercise.

Professional  
Drainage  
Circulation  
compression  
Systems



# Beauty & Health

Air compression therapy system since 1986



# Sliming project

for beautiful skin and body slim

12  
Step

## Full body drainage, DL1200L

### SYSTEM features

- 12 step compression program
- Graphic LCD display
- 8 compression modes (A mode ~ H mode)
- Individual pressure setting of each chamber
- Skip pressure optionally of a chamber
- Inflation time control by 'HOLD' button
- Interval time control by 'INTERVAL' button

### Specifications

- Pressure range: 0mmHg (Skip), 20 ~ 200mmHg
- Time range: 0 ~ 90mmHg
- 8 compression modes: A ~ H mode
- Hold time range: 0 ~ 6 seconds
- Interval time range: 0~ 19 seconds
- Machine size: 400 x 350 x 220mm
- Machine Weight: 18kg

## Slim line & Clean skin



### DL1200L (12steps high class model)

#### Features

- Effective drainage & circulation by soft and minute massage of 12steps
- Selectable 9 massage types
- Individual pressure setting
- Various applications for sliming leg, arm and lower body
- High waist pants from foot to abdomen



# Sliming project for beautiful skin and body slim

6 Step

## Multi-Drainage set, MK300L



### SYSTEM features

- Touch key pad controllers
- Separate settings of 2 channels
- Maximum 4 cuffs use
- Compression speed controller: 1 ~ 6 speed level
- Optional care program: 6 steps
- Reverse compression controller
- Pressure sensor controller

### Specifications

Pressure range: 10 ~ 200mmHg ( $\pm 20$ mmHg)

Time range: 0 ~ 99 minutes

Main body weight: 13kg

Specifications

Pressure range: 10 ~ 200mmHg

Time range: 5 ~ 95minutes

Compression mode: A mode, B mode, Full mode



# Sliming project for beautiful skin and body slim

4 Step

## Center body drainage, LX7

### Specifications

New automatic system

Pressure: 20~250mmHg

Optional care (foot, calf, knee, thigh)

Automatic optimum start button

Soft touch key pad controllers

Air sensor for minute pressure control

Soft pressure controller



# Sliming project for beautiful skin and body slim

Aircompression therapy System

4 Step



**Easthic Management step  
for beautiful shin and body slim**

4 Step

## Beauty & Health care system

Standard portable model, DL2003V3



**DL2003V3 Premium** (Green, Yellow)

- Pressure range: 10 – 250mmHg
- Time range: 10, 20, 30min.
- Body weight: 2kg
- Body size: 190 X 250 X 210mm



**DL2003V3 Moderate** (Pink, Gray)

- Pressure range: 30 – 240mmHg
- Time range: 0–30min.
- Body weight: 2kg
- Body size: 190 x 250 x 210mm



*Happy Life with Doctor Life!*



# Sliming project for beautiful skin and body slim

This is New obesity treatment solution to treat “Cellulite” that major cause of various adult diseases by suitable and efficient treatment methods for each individual case.

**Step 1:** Pre-Lipolysis

RF, Endomology

**Step 2:** Lipolysis

Carboxy, Cavitation,  
Injection, HPL

**Step 3:** Carriage of Melted fat cells

IPC system,

**Step 4:** Combustion

Treadmill, IPC, Electro-  
stimulation

**Step 5:** Toning, Firming

RF, Cavitation, Carboxy,  
Laser

# **Sliming project** for beautiful skin and body slim

## **Step 1. Relaxation (Heating)**

The relaxation of body is the warming up step to/before receives all therapies. To relax a body, thermo therapies like Sauna, Thermo therapy equipment use, Fomentation with hot pack, steam towel are used in this step.

## **Step 2. Dissolution and melting of fat (cellulite)**

It is the step to dissolve and melt the hard and surplus fat including fat and cellulite by PPC or LLD injection operation, Various stimulators like Radiofrequency devices, Ultra cavitations, ultra sound stimulator or professional cellulite dissolution creams.

## **Step 3. Drainage and Detox (fat and cellulite)**

**DS maref drainage system air compression system is used to drain the toxic including fat and cellulite melted and dissolved through the process of step 2 to drainage outlets of body after the body is sufficiently relaxed and stimulated by devices of step 1 and 2.**

# Basic Functions for Home use

## ❖ Pump Function – (Deflation and Inflation Function)

Expanding of each capillary vessel by the pump function of the compression movement helps the delivery of clear blood including the increased oxygen over whole human body and the removal of the bad deposits (Cholesterol, etc.).

## ❖ Massage Effect

It massages fatigue and hard muscles, congestion parts or cellulite parts repeatedly with soft air pressure. It promotes the effects of exercise if it is used before and/or after exercise and it's like soft warming up.

## ❖ Stretching Effect

When cuffs pressurize legs, arms or waist, it makes the joints to be stretched naturally.

## ❖ Deep Breathing Effect (Abdominal Breathing)

It makes a user to breathe deeply unconsciously during using a device.

## ❖ Waist Cuff Effect

It is good for waist pain, intestine movement, dissolution of abdomen fat (cellulite) and pelvis contraction movement.

# Home use Tips

- ❖ It is good to use DS maref drainage system with a patient's comfortable posture for the best effects.
- ❖ The pressure around 20~80mmHg for 15 minutes is proper, but the pressure intensity and time should be controlled by user's state and doctor's indications.
- ❖ We recommend all beginners to apply the device with the lowest pressure for 5 minutes for their safe use. User can increase the pressure intensity gradually, according to a patient's state and a doctor's advice.
- ❖ Use DS maref drainage system frequently for the best effects.
- ❖ We recommend to use only one arm cuff to prevent a heart attack and because the arm is near to the heart and a user can not use two arm cuffs at the same time. It's good to use two arm cuffs under doctor's indication and a protector to the near a user.
- ❖ Please breathe deeply and repeatedly by matching the rhythm of deflation and inflation of each chamber (Abdominal breathing) because the speed of DS maref drainage system is the similar with pulse speed. Please breathe out when air from each chamber comes out and breathe in when air comes in each chamber. It makes increase more the effects of DS maref drainage system.
- ❖ If DS maref drainage system is used before or after exercise or stretching, it helps the effect of it.

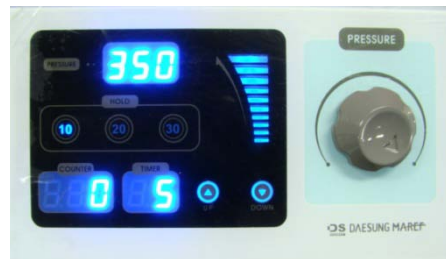
# Reliver (Hand rehabilitation system)

*RELIVER is a function-improving device for the hand that has operational problems due to brain/spinal diseases, peripheral-nerve trouble, stroke and other wounds.*



## Specifications

- Touch Key pad
- Pressure range: 60 ~ 350mmHg
- Time: 5 ~ 95 minutes (5min unit)
- Hold time: 10, 20, 30seconds
- Movement counter display
- Portable design



Hand Rehabilitation device, Reliver



**THANK YOU!**

# Contact us!!

- Sales manager/Overseas, Helen Kim (ext.2)
- Sales manager/Eastern area, Ryan Lee (ext.209)
- Sales manager/America, Jay Kim (ext.235)
- Sales manager/Middle East, Tracy Seo (ext.226)

Email: [ds@dsmaref.com](mailto:ds@dsmaref.com), TEL: 82 31 459 7211, FAX: 82 31 459 7215  
[www.dsmaref.com](http://www.dsmaref.com)



For your happier and healthier life since 1986